



Providing families with access, answers and action



Understanding the DDD Budget and a Guide to the Services Available

Presented By:

Trisha Bailey

Trainer/Community Liaison
NJ Support Coordination @
Caregivers of NJ



The NJCAT

- Once DDD (the Division of Developmental Disabilities) says you are eligible for services, the NJCAT will be completed.
- NJCAT = **New Jersey Comprehensive Assessment Tool**: (self-care, behavioral, medical)
- The answers are assessed and DDD will assign you a Tier letter (A-E)
- In addition, an acuity differentiated factor will be added to the tier for individuals with high clinical support needs based on medical and/or behavioral concerns.
- The acuity-based tiers include: Aa, Ba, Ca, etc..)

The NJCAT

- Each tier letter corresponds to an individualized budget you will receive from the Division.
- Each tier letter is also associated with a rate that providers get paid for providing services.
- The budget can be used to purchase various supports and services.

How Much Money Corresponds To Each Tier?

Supports Program

Tier	Employment/Day	Ind/Family Supports	Total
A	\$19,239	\$6,620	\$25,859
Aa	\$27,072	\$6,620	\$33,692
B	\$24,538	\$13,240	\$37,778
Ba	\$34,445	\$13,240	\$47,685
C	\$30,356	\$13,240	\$43,596
Ca	\$42,624	\$13,240	\$55,864
D	\$44,986	\$19,859	\$64,845
Da	\$63,188	\$19,859	\$83,047
E	\$59,674	\$19,859	\$79,533
Ea	\$83,866	\$19,859	\$103,725

Community Care Program

Tier	Employment/Day	Ind/Family Supports	Individual Supports	Total
A	\$19,239	\$6,620	\$33,157	\$59,016
Aa	\$27,072	\$6,620	\$63,237	\$96,929
B	\$24,538	\$13,240	\$66,314	\$104,092
Ba	\$34,445	\$13,240	\$126,473	\$174,158
C	\$30,356	\$13,240	\$110,522	\$154,118
Ca	\$42,624	\$13,240	\$210,788	\$266,652
D	\$44,986	\$19,859	\$154,731	\$219,576
Da	\$63,188	\$19,859	\$295,103	\$378,150
E	\$59,674	\$19,859	\$198,940	\$278,473
Ea	\$83,866	\$19,859	\$379,418	\$483,143

**“What Happens If I
Don’t Have Enough
Money or My
Needs Change?”**

NJCAT Reassessment Requests

- Must Be Substantiated
- Must Be Requested By The Family or Individual
- Does Not Guarantee a Tier Change OR may result in a higher tier
- Can Be Denied

The DDD Budget

- Is not actual money you will receive.
- You will choose a **support coordination agency and be assigned a support coordinator** that will help you find services and supports you need or are interested in.
- Your support coordinator will write a plan (The ISP) and add in the services you want, ensuring you stay within your budget.
- The budget renews yearly, however, any money not used in a given plan year goes back into the “pot”.

What Services Can You Purchase With Your DDD Budget?

Assistive Technology	Natural Supports Training	Prevocational Training
Occupational Therapy	Career Planning	Community Based Supports
Behavioral Supports	Physical Therapy	Respite
Personal Emergency Response System (PERS)	Cognitive Rehabilitation	Day Habilitation
Speech, Language and Hearing Therapy	Environmental Modifications	Goods and Services
Support Coordination	Supported Employment (Small Group)	Transportation
Fiscal Management Services	Interpreter Services	Community Inclusion
Supports Brokerage	Vehicle Modification	Supported Employment (Individual)

Assistive Technology

- **Assistive Technology Device:** an item, piece of equipment, or product system used to increase, maintain, or improve functional capabilities of an individual.
- **Assistive Technology Service:** a service that directly assists a participant in the selection, acquisition, or use of an assistive technology device.



Examples of Assistive Technology

- Evaluation of assistive technology needs
- Purchasing, leasing, acquiring AT
- Designing, fitting, customizing devices
- Repairing or replacing devices
- Ongoing maintenance fees
- Training or technical assistance for the individual, family, guardians, professionals, etc. to use the technology



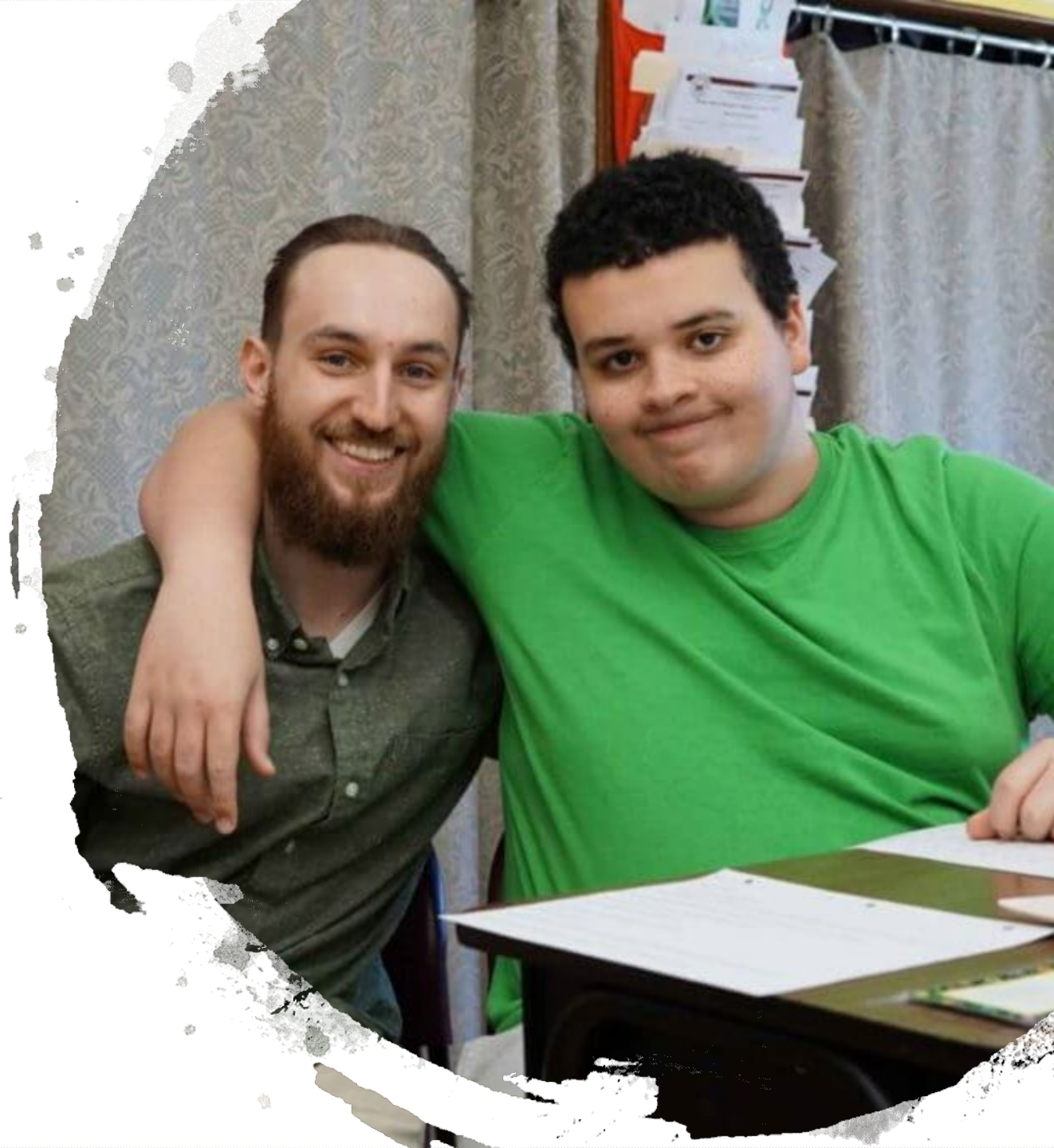
Therapy

- Occupational Therapy
- Physical Therapy
- Speech and Language and Hearing Therapy



Behavioral Supports

Individual and/or group counseling, behavioral interventions, diagnostic evaluations or consultations related to the individual's developmental disability and necessary for the individual to acquire or maintain appropriate interactions with others.



Personal Emergency Response System (PERS)

- An electronic device that helps someone secure help in an emergency
- Is connected to the person's phone and is programmed to signal a response center once a "help" button is activated.



Examples of PERS Activities

- PERS Equipment
- Cost of installation and testing
- Monthly cost of response center services



Career Planning

- An employment planning and support service that provides assistance to obtain, maintain or advance in competitive employment or self-employment
- Focused and limited in time
- Engages a participant in identifying a career direction and developing a plan for achieving competitive, integrated employment



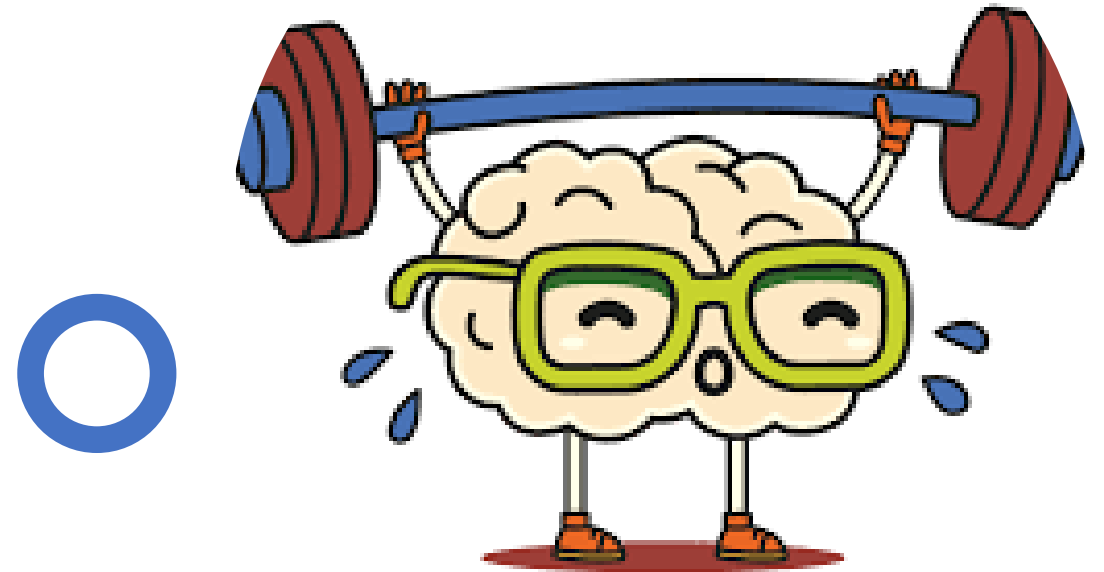
Examples of Career Planning Activities

- Determination of career direction through interest inventories, situational assessments, etc.
- Development of a plan that states the career objective and guides individual employment support



Cognitive Rehabilitation

- A systematic, functionally-oriented service of therapeutic cognitive activities
- Based on an assessment and understanding of the person's brain behavior deficits





Examples of Cognitive Rehabilitation

- Direct retraining
- Compensatory strategies
- Cognitive orthotics and prostheses

Community Based Supports

- services that provide direct support and assistance, with or without the caregiver present
- Can occur at home or in the community
- **Goal:** to achieve and/or maintain increased independence, productivity, enhanced family functioning, and inclusion in the community



Community Based Supports:

- Delivered one-on-one
- Activities of daily living, ordering off a menu, purchasing items, learning basic cooking, laundry skills, etiquette, travel training, accessing activities in the community, etc.



Day Habilitation

- Services that provide education and training to acquire the skills and experience needed to participate in the community
- Include activities to support participants with:
 - problem-solving skills
 - self-help
 - social skills
 - adaptive skills
 - daily living skills
 - leisure skills



Day Habilitation Cont'd

- Activities and environments are designed to foster the acquisition of skills, building positive social behavior and interpersonal competence, greater independence and personal choice.
- Services are provided during daytime hours and do not include employment-related training.
- May be offered in a center-based or community-based setting.



A photograph of a house with a wooden ramp and stairs leading to the front door, illustrating environmental modifications. The ramp is made of light-colored wood and has a handrail. The stairs are also made of wood and have a handrail. The house has white siding and a green and white striped awning over the front door. The number 888 is visible on the door.

Environmental Modifications

physical adaptations to the private residence that are necessary to ensure the health, welfare and safety of the participant or that enable the participant to function with greater independence in the home

Examples of Environmental Modifications

- Ramps
- Grab-bars
- Widening of doorways
- Modifications of bathrooms
- Emergency generator for equipment
- Air filters/humidifiers
- Stair lifts
- Ceiling track systems for transfers



Goods & Services

- Services, equipment or supplies, not otherwise provided through generic resources, the budget, or through the State Plan, which address an identified need and meet certain requirements
- Purchased from the participant's budget and paid and documented by the fiscal intermediary (Public Partnerships)



Examples of Goods & Services

- Fingerprinting, drug testing costs needed to be considered for a job
- Garage door opener for access to home
- Microwave oven to assist someone in cooking his/her own meals
- Classes within the general public
- Tutoring Services
- Music Lessons
- Gym Memberships



Interpreter Services

- Service delivered to a participant face-to-face
- Supports them in integrating more fully with community-based activities or employment
- May be delivered in a participant's home or in a community setting
- Must be delivered by an individual proficient in reading and speaking in the language in which the participant speaks.
- Includes American Sign Language



Natural Supports Training

- **Natural Supporters:** any person, family member, neighbor, friend, companion, or co-worker who provides uncompensated care, training, guidance, companionship or support to a participant
- Training and counseling services for individuals who provide unpaid support, training, companionship or supervision to participants



Examples of Natural Supports Training

- Training in use of equipment
- Training on how to implement behavior plan
- Training on ambulation/transfer techniques
- Training on dietary/eating techniques
- Training on diabetes management
- Training on implementation of behavior plan
- Training on PT or OT activities at home



A photograph of an office environment. In the foreground, a man with a beard, wearing a light blue dress shirt and a dark tie, is seated in a wheelchair. He is looking towards the left. In the background, a woman with long brown hair, wearing a white sleeveless top, is seated at a desk, looking down at some papers. The desk has a computer mouse, a pen holder, and some papers. There are shelves in the background with binders and a potted plant.

Pre-Vocational Training

- Services that provide learning and work experiences
- Can include volunteering
- Goal is to develop general, non-job-task-specific strengths and skills that can lead to competitive employment in the community

Examples of Pre-Vocational Training

- Training in effective communication with supervisors, co-workers and customers
- Generally accepted community workplace conduct and dress
- Ability to follow directions
- Ability to attend to tasks
- Workplace problem solving skills and strategies
- General workplace safety and mobility training



Supported Employment

- Activities needed to help a participant obtain and maintain an individual job in competitive or customized employment or self-employment, in an integrated work setting in the general workforce
- Can take place one-on-one
- Can take place in a small group setting



Examples of Supported Employment

- Training and systematic instruction
- Job coaching
- Benefit support/planning
- Job development
- Travel training
- Training that will enable an individual to be successful in integrating on a job setting (even where not specifically related to job-skills)
- Job site analysis



Respite

- Furnished on a short-term basis because of the absence or need for relief of those persons who normally provide care for the participant.
- Can be delivered as partial hour, hourly, daily without overnight, or daily with overnight.
- Can be delivered in the person's home, a group home, camp setting, or hotel



Transportation

- Service offered in order to enable participants to gain access to services, activities and resources
- Can be provided by Medicaid/DDD approved transportation providers, generic transportation services/vendors used by the general public, and/or Self-Directed Employees.



Vehicle Modifications

Assessments, adaptations, or alterations to an automobile or van that is the participant's primary means of transportation in order to accommodate the special needs of the participant

- Vehicle steering/brake controls
- Vehicle lift
- Vehicle ramp
- Raising/lowering vehicle roof/floor



Self-Directed Services

- Can be for in-home and/or community-based supports
- Offers increased choice and authority over how, and from whom, an individual receives waiver-based services
- Is an alternative to more traditional provider-managed services
- Provides an opportunity for participants to manage the organization of the supports and services they receive.

- You can self-direct some or all services.
- This means that, within the parameters of your individual budget, you can choose to self-direct by hiring your own caregiver - known as a self-directed employee - to provide needed services.

For More Information About Self-Direction:

<https://www.state.nj.us/humanservices/ddd/individuals/community/selfdirected/>





The Role Of Your Support Coordinator

You Have a Choice!

Upon Completion of the NJCAT,
soon after, you will need to choose
a Support Coordination Agency.

Your Support Coordinator will:

- Discuss your goals, likes, dislikes, and goals
- Discuss service options
- Connect you to service providers
- Make sure you stay within your budget
- Understand DDD's policies and procedures





I'm Here To Help You!

Contact Us For More Information:

Trisha Bailey

(856) 685- 9217

1-877-265-6360

tbailey@njcaregivers.org

www.njcaregivers.org

We offer Support Coordination in the following counties:

**Atlantic, Burlington, Bergen, Cape May,
Cumberland, Hudson, Hunterdon,
Mercer, Passaic, Salem, Somerset,
Sussex, Warren**